

open hearts
open minds
open doors



Communicator

an edition of

The United Methodist Reporter

The people of The United Methodist Church

Two Sections, Section A

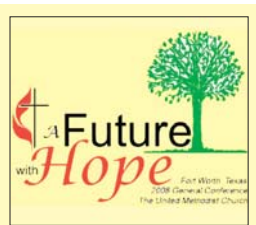
VOLUME 153 NUMBER 37

043000

February 29, 2008

The Healthy Church Initiative

A Pathway to Healthy Disciples involved in Healthy Ministry Leading to Healthy Churches



April 23-May 2 — General Conference in Fort Worth, Texas

The Peninsula-Delaware Annual Conference

Laity Session
June 7, 2008

Clergy Executive Session
June 11, 2008

Annual Conference Sessions
June 13-15, 2008



July 13-18 — Jurisdictional Conference in Harrisburg, Pennsylvania

Lenten Day Apart – Our “Super Tuesday”

Bishop Marcus Matthews greeted those gathered for the Lenten Day Apart by saying “welcome to our Super Tuesday.”

Held on February 5th, it was primary election day for Delaware and Aldersgate, where the event was held, was also being used as a polling place.

The guest speaker for the day was Bishop Jeremiah Park, Episcopal leader for the Greater New York Annual Conference. Bishop Park was born and raised in Korea, and studied at Drew University after he and his wife had immigrated to this country. They had finished their schooling in Korea and had already begun to work in their respective venues when he received his call to ministry. Now he serves on the Board of Trustees at Drew along with Bishop Matthews.

As he began, Bishop Park explained that even though we take this journey in this Lenten Season, our journey doesn't end in a tomb. “Our risen Christ is right here!”

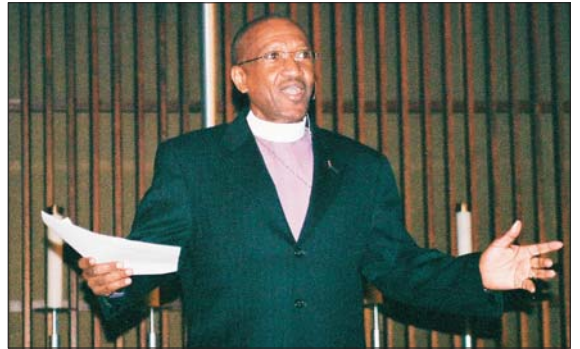
Bishop Park shared his experience when going before the Board of Ordained Ministry and especially about the time he had to prepare and preach before a live audience. This probably doesn't seem ‘too’ difficult because, after all, that is what preachers do – but he had to preach his entire sermon in English. In his sermon he

preached from Matthew 16 and referred to John the Baptist. After the service as he was greeting people an elderly person came up to him and asked if he was a Baptist. When he said no, I am United Methodist, she explained that with his accent, she kept hearing him say ‘join the Baptist’ when he was actually saying John the Baptist.

Bishop Park then asked the audience, “what is your accent? What is your church known for? Thanks be to God that we are a Church with a strong accent.”

During the morning session Bishop Park spoke on the Great Commission and about our pledge, our commitment to the church. In our churches today he said that it is difficult to help our people discern what kind of commitment that we are supposed to have with each other, the church, and to our calling. Many persons have said to him that we need a UM101 to explain what we are about and how Methodism is different from other churches. There is a real need for education because these questions are coming from our own members. He went on to explain about our commitment, a United Methodist covenant, that which Jesus desires of us as his disciples.

The morning continued with worship and Communion presided over by Bishops Matthews and Park and served by members of the two Cabinets of the Philadelphia Area.



Bishop Marcus Matthews welcomes the Philadelphia Area pastors to the 2008 Lenten Day Apart



Bishop Jeremiah Park, Episcopal leader for the Greater New York Annual Conference



Rev. Patti Collett, pastor of Wyoming UMC in the Peninsula-Delaware Conference, uses her gift of the piano to accompany those attending the Bishop's Lenten Day Apart



Director of Connectional Ministries for Peninsula-Delaware Conference, Rev. Dr. Sandra Steiner Ball, and Eastern Pennsylvania, Rev. Lillian C. Smith, participate in the Bishop's Lenten Day Apart

Mark Your Calendars for an exciting Event! The Martin Luther King, Jr. Symposium

When: Saturday April 5
Time: 8:30 to 1:00 p.m.
Where: Union UMC in Bridgeville
Theme: Are We Living the Dream . . . It Ain't Hard!
Scripture Text: I John 5:1-5

The main speaker will be Erin Marie Hawkins, Associate General Secretary of the United Methodist Church's General Commission on Religion and Race.

Erin serves as a staff representative and resource consultant to the Southeastern Jurisdiction, to National Black Methodists for Church Renewal, and to the Strengthening the Black Church for the 21st Century Initiative.

"Erin has a passion for developing per-

sonal and organizational integrity and effectiveness, as well as new leadership for lay ministry, especially among young adults. Her commitment to these values bolsters her own work in advocating for justice, empowerment and reconciliation among her people and indeed, among all of God's people. Her life is guided by a favorite scripture, Phillipians 1:9-11, the Apostle Paul's prayer that 'your love may over flow more and more with knowledge and full insight to help you determine

what is best, so that in the day of Christ you may be pure and blameless, having produced the harvest of righteousness that comes through Jesus Christ for the glory and praise of God.'" - quoted from the Biography of Erin Hawkins

There will also be a panel discussion involving leaders from several ethnic communities residing within the bounds of our Conference. They will be sharing in a discussion about living the Dream.

Stay tuned! There is more information



Erin Marie Hawkins

to come! This will be an exciting day - different from any symposium you have experienced in the past!

Around The Conference

Local Pastor Selected To Complete Term



Rev. Anna L. Cottom

On February 11, 2008, the Northeastern Jurisdiction Multi-Ethnic Center for Ministry announced the selection of

Rev. Anna L. Cottom to serve as part-time consultant for the remainder of the current quadrennium. She will assist with strengthening working relationships with the various constituencies of The United Methodist Connection and work to identify creative avenues for revitalizing the multi-ethnic ministry. In addition to serving as pastor of several congregations in the Peninsula-Delaware Conference over the past ten years, Rev. Cottom brings considerable experience in organizational administration to the task of consulting with the Multi-Ethnic Center for Ministry.

Upcoming Young People's Ministry Event

Sunday, March 2 from 3:00-6:00 p.m. at Mariner's Bethel United Methodist Church in Ocean View, Delaware (marinersbethel.org). This event is designed specifically for confirmation classes and their leaders. It is a celebration of the confirmation experience and the declaration of faith that your students will be making at the time of their confirmation. Bishop Marcus Matthews will be the featured speaker. The event will also feature a worship leader and entertainment. A free will offering will be collected to help defray expenses.

On-Line Daily Devotions Submissions Sought

The Peninsula-Delaware Conference's website has a section for Daily Devotions. Currently we are linked to The Upper Room for their devotions. We would like to offer local individuals/churches the opportunity to participate in the on-line devotions and are asking for your submissions. We would like to receive a month's worth of daily devotions (we will try to accommodate the month of your choice).

If you would like to participate in this new endeavor, please contact Tammy Ward, Communications Coordinator, at 1.877.736.3351, ext. 24 or e-mail tward@pen-del.org.

Participants will be acknowledged on the website and in this publication for their contributions. This is something that a local church group/organization could do together or individual persons, if so led, are also encouraged to participate. As the spirit leads, please consider this ministry.



You are invited to participate in A MONASTIC DAY APART

A DAY OF PRAYERFUL WORK, PERSONAL MEDITATION, SILENCE AND COMMUNITY

Christian Monasticism is a way of living that is born out of a desire "to entertain silence in the heart and listen for the voice of God - to pray for discovery" (Thomas Merton) and for the purpose of being recharged by the Infinite. This Day Apart is an opportunity to experience monasticism in miniature. The day will consist of prayerful work (mindful prayer while tending to the reality of work), personal and guided meditation, community prayer and meals and silence.

PECOMETH -- MONDAY, APRIL 21, 2008
 8:00AM- 4:00PM
 \$10 PER PERSON
 SIMPLE LUNCH PROVIDED

(Overnight accommodations available at Pecometh for Sunday night at \$25 per person, which includes continental breakfast on Monday)

- 8:00am Morning Prayer at the Outdoor Chapel
- 9:00am Silent Personal Prayer and Work
- 11:30am Mid Day Community Prayer at the Outdoor Chapel
- 12:00pm Community Lunch
- 12:30pm Meditation of Examination of Conscience
- 1:00pm Silent Personal Prayer and Work
- 3:00pm Closing Worship / Eucharist and Anointing



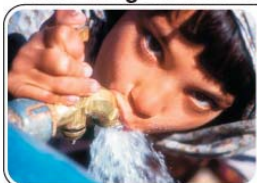
Hospitality maintains a prominence in the living monastic tradition. As outlined in Saint Benedict's Rules for Monasteries, it is recognized that the guest represents Christ and is welcomed into the community as such.

ALL ARE WELCOME!

Please register with Ann Ashe at annashe@pecometh.org or 410-556-6900 x100.

This event is sponsored by the Conference Spiritual Formation Team.

Share the goodness of life with those who hurt.



Giving to One Great Hour of Sharing enables the United Methodist Committee on Relief to keep our promise that 100 percent of your designated gift goes entirely to specific causes.

ONE GREAT HOUR OF SHARING
 Sunday, March 2, 2008

Communicator

Peninsula-Delaware Conference,
 139 N. State Street, Dover, DE 19901

e-mail: tward@pen-del.org Website: www.pen-del.org
 Phone: 302.674.2626 Or toll-free: 1.877.736.3351 Fax: 302.674.1573

Marcus Matthews, Bishop

Sandra Steiner Ball, Director of Connectional Ministries

Tamara Ward, Editor, Communications Coordinator

Linda Stimmel, Layout & Design

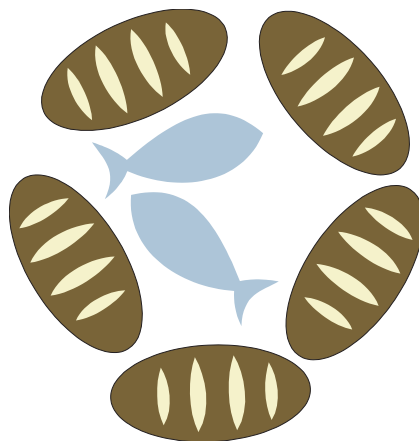
Linette Warren, Subscriptions Individual subscriptions, \$9.50 per year

All information marked UM Reporter within the Peninsula-Delaware Conference newspaper is the sole responsibility of the UM Reporter and is not necessarily the views of the annual conference.

The United Methodist Reporter (USPS 954-500) is published weekly by UMR Communications, 1221 Profit Drive, Dallas Texas 75247-3919. Periodicals postage paid at Dallas Texas and additional mailing offices. Postmaster: Send address changes to The United Methodist Reporter. PO Box 660275, Dallas Texas 75266-0275.

2007 Peninsula-Delaware Conference Apportionment Report

The Peninsula-Delaware Conference ushered in a new journey toward Healthy churches in 2007. I am pleased to report that the financial picture of the Conference is one of good health. The books were closed with a slight deficit of \$34,615 in receipts supporting the Conference funding plan. Receipts collected after the final cut-off has amounted to \$28,627, leaving a deficit of just \$6,288. That is not bad compared to a total funding plan of \$5,074,986. Our Conference maintained its' 22 years of full payment of ALL General Church Funds. God's blessings have truly been poured out to this Conference for many years. The Council on Finance and Administration would like to thank all of the churches for their con-



tinued efforts in support of the Conference and General Church ministries. It is all our local churches connected as one body,

known as the United Methodist Church, that gives us strength and makes us unique. As the Conference "Gears-Up" for the journey to Healthy Churches, we enter 2008 with optimism that God's blessing will once again provide a healthy financial picture.

The Advance, as second mile giving, is truly a reflection of our call to follow the example of Jesus and share the abundance that has been provided by our Lord. The table below reflects an increasing response to this call in 2007. We extend our heartfelt appreciation for the continued support of the missions and ministries of the United Methodist Church in local communities, within our conference and throughout the worldwide.

General Church and Conference Missions

	2007	2006
World Missions	\$ 70,039	\$ 60,166
National Missions	24,916	24,436
UMCOR	92,633	82,159
Africa University Scholarship	32,168	34,345
Special Sundays/Offerings	93,727	88,255
Conference Missions	<u>166,326</u>	<u>143,593</u>
Total	\$479,803	\$432,954

General Church Apportionments

World Service	\$ 772,013
Black College Fund	105,783
Ministerial Education Fund	265,571
Africa University	23,360
General Administration	66,767
Interdenominational Co-op Fund	20,568
Episcopal Fund	<u>198,500</u>
Total	\$1,452,562

Apportionments and Receipts

DISTRICT	APPORTIONMENT 2007	APPORTIONMENT 2006	PAID 2007	PAID 2006	% 2007	% 2006
Dover	\$1,326,985.00	\$1,297,324.00	\$1,317,831.30	\$1,298,531.56	99.3%	100.1%
Easton	1,047,826.00	1,039,698.00	978,509.65	959,603.27	93.4%	92.3%
Salisbury	1,111,443.00	1,104,113.00	1,061,097.16	1,058,607.25	95.5%	95.9%
Wilmington	1,871,630.00	1,858,079.00	1,711,560.62	1,704,000.34	91.4%	91.7%
TOTAL	\$5,357,884.00	\$5,299,214.00	\$5,068,998.73	\$5,004,757.76	94.6%	94.4%

Comparison of Churches Paying Apportionments in Full

DISTRICT	2007 TOTAL CHURCHES	2006 TOTAL CHURCHES	2007 # PAID	2006 # PAID	2007 % PAID	2006 % PAID	2007 # UNPAID	2006 # UNPAID	2007 % UNPAID	2006 % UNPAID
Dover	106	108	101	105	95.3%	97.2%	5	3	4.7%	2.8%
Easton	131	131	113	106	86.3%	80.9%	18	25	13.7%	19.1%
Salisbury	130	130	104	107	80.0%	82.3%	26	23	20.0%	17.7%
Wilmington	82	82	59	59	72.0%	72.0%	23	23	28.0%	28.0%
TOTAL	449	451	377	377	84.0%	83.6%	72	74	16.0%	16.4%

Peninsula-Delaware Conference—Apportionments and Receipts
For the period of January 1-December 31, 2007

DOVER DISTRICT

Table with columns: CHURCH, PASTOR, APPOINTMENT, PAID, PERCENT. Lists various churches and their financial data for the Dover District.

Table with columns: CHURCH, PASTOR, APPOINTMENT, PAID, PERCENT. Continues the list of churches and their financial data for the Dover District.

Table with columns: CHURCH, PASTOR, APPOINTMENT, PAID, PERCENT. Continues the list of churches and their financial data for the Dover District.

EASTON DISTRICT

Table with columns: CHURCH, PASTOR, APPOINTMENT, PAID, PERCENT. Lists various churches and their financial data for the Easton District.

Table with columns: CHURCH, PASTOR, APPOINTMENT, PAID, PERCENT. Continues the list of churches and their financial data for the Easton District.

Table with columns: CHURCH, PASTOR, APPOINTMENT, PAID, PERCENT. Continues the list of churches and their financial data for the Easton District.

WILMINGTON DISTRICT

Table with columns: CHURCH, PASTOR, APPOINTMENT, PAID, PERCENT. Lists various churches and their financial data for the Wilmington District.

SUMMARY TOTALS

Summary table with columns: DISTRICT, APPOINTMENT, PAID, PERCENT. Totals for all districts.

General Conference Update

By Kevin Goodwin & Rev. Sandra Steiner Ball –
Delegation Co-Chairs

First the basics – What is General Conference and what do they do? General Conference meets every four years to review and update both the Book of Discipline and Book of Resolutions. Every United Methodist is permitted to petition General Conference to ask for updates and changes to either book. Each conference is allotted delegates based on laity and clergy membership – Peninsula-Delaware has six of the 992 delegates (3 laity and clergy each). Delegates will spend from 8:00 a.m. to 11:00 p.m. discussing and debating many issues, some of which we have listed below. Over 2000 petitions were submitted this time; each will be initially discussed in one of thirteen legislative committees. Petitions where the

Committee could not reach consensus are then discussed on the floor of the whole Conference. Interspersed are worship services, music from United Methodists from around the world, and speeches. For the first time, we will hear a Youth/Young Adults address.

Issues to be discussed:

- Apportionments and the budget. The General Council on Finance & Administration is requesting a 4-year budget of \$621 million; a 4% increase over the last 4-year budget. The final budget is then allocated back to each Annual Conference based on a formula approved by the Conference.
- The Size of General Conference itself. There are petitions to downsize the delegate count to cut costs. If the biggest cuts are made, we most likely will have only two delegates (instead of six) in 2012. Even if no changes are

made, current rules allow for a 40% reduction in the number of delegates.

- Who decides membership? Sounds like a ‘Well Duh?’ question to some but it became an important issue last year because of a case sent to the church’s supreme court, the Judicial Council. ‘Should the senior pastor have the final say or do we need an appeal process’ will be debated.
- Do we change the Book of Discipline related to policies on clergy qualification? These will include discussing our current stance related to clergy who are gay and whether local pastors should have some privileges currently reserved to ordained clergy only.
- The Council of Bishops’ report. We haven’t seen details yet but related to the role of bishops within the UMC, the number of bishops



- we have, should we continue with our current elected-for-life policy.
- Four Areas of Focus. The Connectional Table (like our Conference Vision Team) is proposing four areas to focus on.

If you have a question you would like the delegation to address before General Conference, send an email to Tammy Ward (tward@pen-del.org). This is the fastest way to reach the entire delegation.

United Methodists Seek Resources for Malaria Campaign

The United Methodist Church has been invited to apply for up to \$5 million in support from the Bill & Melinda Gates Foundation and the United Nations Foundation to underwrite a fund-raising, education and outreach campaign to strengthen its global health ministries, especially work related to malaria and other diseases of poverty in Africa.

Bishop Janice Huie, president of the Council of Bishops, received the invitation in mid-January through the United Nations Foundation, which is helping to facilitate the grant process.

Bishop Felton E. May, interim general secretary of the Global Ministries agency, and the Rev. Larry Hollon, chief executive of United Methodist Communica-



tions, announced the receipt of the invitation in Fort Worth, Texas, on January 26 at a briefing on the 2008 General Conference, which will meet in the Texas city on April 23-May 2.

Both Bishop May and Rev. Hollon said that many details are still to be worked out regarding the grant, the operation of the campaign, and the ministries

that will be supported by the funds expected to be raised. Submitting a formal grant proposal is the next step in the grantmaking process, which began with a letter of inquiry last May.

The United Methodist Church has long been a key player in the fight against malaria and other diseases of poverty, having oper-

ated hospitals, clinics, schools and mission centers across Africa for more than 160 years.

In 2006, the people of The United Methodist Church joined with the United Nations Foundation, *Sports Illustrated*, and NBA Cares to become one of the founding partners of *Nothing But Nets*, a global grass-roots effort to prevent malaria through the purchase and distribution of insecticide-treated mosquito nets to children in Africa, more than a million of whom die from malaria every year. The campaign has raised more than \$18 million so far.

Rev. Hollon noted that global health is one of the four areas of focus that represent a long-term vision for the denomination. ‘Our goal is to ultimately create conditions for better health for people

all over the world,’ said Hollon. ‘Health ministries are an integral part of both domestic and international mission outreach of The United Methodist Church,’ said Bishop May. ‘This has been the case for almost two hundred years. The commitment takes various forms in different time periods and places. Today, the Lord is calling us to tackle the diseases of poverty, those plagues that must and can be controlled. Such work is our God-given responsibility.’

The church also has a long history in education, advocacy, medical ministries and creating public awareness of health issues including HIV/AIDS, another of the diseases of poverty. The 2004 General Conference set up a Global AIDS Fund to address this health issue.

Global AIDS Fund Committee Hosts April Briefing in Fort Worth

The United Methodist Global AIDS Fund Committee will sponsor the ‘Lighten the Burden II’ HIV/AIDS briefing at First United Methodist Church in Fort Worth on April 22 from 8:00 a.m. to 4:00 p.m. on April 22.

The event aims to heighten awareness of United Methodists about AIDS, malaria and tuberculosis by sharing stories about realities on the ground and how the denomination is responding. Projects funded by the United Methodist Global AIDS Fund will be featured.

The one-day briefing precedes the United Methodist General

Conference, a meeting of the denomination’s top policy-making body, which convenes April 23-May 2 at the Fort Worth Convention Center.

- Keynote speakers include:
- Kay Warren, a two-time cancer survivor, launched the HIV/AIDS Caring Community, an online community that offers resources and inspiration for churches involved in HIV/AIDS ministry. She and her husband, Rick Warren, author of ‘The Purpose-Driven Life,’ were instrumental in presenting Saddleback Church’s first HIV/AIDS conference,



‘Global Summit on AIDS and the Church,’ which is now an annual event.

- Bishop João Somane Machado, Episcopal leader in Mozambique, serves in a country

that has declared HIV/AIDS a national emergency. The epidemic has reduced life expectancy from 41 years in 1999 to 38.1 years in 2004. On average, 500 new infections occur every day, 90 of them among young children through mother-to-child transmission. Bishop Machado is an international leader in the fight against AIDS and malaria.

- Shane Stanford, who is HIV-positive, is the featured preacher on *The United Methodist Hour* and serves as teaching pastor at Main Street United Methodist Church in Hattiesburg, Miss. Shane also

serves on the UMC Global AIDS Fund Committee.

Other speakers will be Bishop Hope Morgan Ward of the Mississippi Episcopal Area; Dr. Cherian Thomas of the General Board of Global Ministries, the Rev. Kent Millard, pastor of St. Luke’s United Methodist Church in Indianapolis, and Dr. Pauline Muchina, UNAIDS (invited).

There is no cost for registration. A light breakfast and lunch will be served. To make reservations to attend, register online or contact Donna Brandyberry at dbrandyberry@umc-gbcs.org or 202.488.5641. The registration deadline is April 11.

Getting Ready For Annual Conference

It's That Time of the Year Again!!! – Clergy/Laity Banquet – May 9, 2008

We greet you in the name of our Lord and Savior Jesus Christ. As the Board of Lay Ministries prepares for our Annual Clergy/Laity Banquet on Friday, May 9, 2008, we are looking forward to an awesome time with God. The speaker for the evening will be Dr. Scott Johnson, Conference Lay Leader in the Western New York Conference. The theme this year is "Gear Up."

The Clergy/Laity Banquet will be held at Whatcoat United Methodist Church at 341 Saulsbury Road in Dover, Delaware. Time: 6:00 p.m. Cost \$30.00



Dr. Scott Johnson
Robert & Adonna Green
Music Ministry Hymns of Praise

will provide inspirational music for the evening. They offer "A New Holy Ghost Sound" featuring Steel Drum & Flute. Also, we will induct the newest members to the Order of St. Barnabas.

We need your help! We have printed 250 tickets and must sell them all. Please contact Marilyn Cleeton at the Bishop Felton Edwin May Resource Center in Dover, one of the four district offices (Dover, Easton, Salisbury or Wilmington) or Betty M. Gooch for your tickets. Deadline to purchase tickets is Friday, April 24, 2008.

See you on May 9th.

Resolutions for Annual Conference

Each year the Annual Conference offers the membership the opportunity to submit resolutions to the body for discussion and vote on a variety of topics, issues, and concerns.

In 2006 the Annual Conference voted to implement a deadline for all resolutions (fixed annually by the Conference Secretary) in order to give ample time for all voting members to review them and be prepared to discuss and vote on them at the Annual Conference Sessions.

This year's deadline for resolutions is **Friday, March 14th**. You can submit them by e-mail

(mcleeton@pen-del.org), fax them (1.302.674.1573) or mail them (139 N. State Street, Dover, Delaware, 19901 – Attn: Marilyn Cleeton) to arrive no later than this date.

If you have any questions, please feel free to contact Marilyn at the BFEM Resource Center (1.877.736.3351).

(Editor's Note: Issues/Concerns that may arise as a result of the General Conference will be addressed at next year's Annual Sessions of the Peninsula-Delaware Conference and would be reflected in Resolutions submitted in 2009.)

Call for Annual Conference Ushers

Looking for a way to help at Annual Conference this year (June 13, 14, 15)? What about volunteering as a member of the USHER TEAM? Head Usher Rev. Fred Duncan is putting out a call for all those interested to contact him. The ushering team should be comprised of

a diverse group of laity and clergy, male and female, to help with such things as: distribution of Annual Conference Resolutions and other important information; take any offerings; assist the Conference Director with any balloting; and be available to the Bishop as needed. If interested,

please contact Rev. Duncan at 302.645.9426 or email him at pastorfred5@comcast.net. (Special Note: The Laity Session scheduled for Saturday, June 7th is also in need of approximately 8 persons to volunteer for this morning event as ushers)

Hospitality Volunteers Needed

The Annual Conference Hospitality Team is looking for volunteers to be greeters and help with questions during the Annual Conference weekend – June 13-15, 2008. There will be opportunities in both the Student Services Center and the Ella Fitzgerald Center. The

Hospitality Team is looking for individuals that would be able to give a few hours, a half-day, a whole-day, or whatever you can give and there is no age requirement. Young and young at heart are encouraged to contact Pat Dorey (pdorey@udel.edu). Please pass this request on to your ministry teams and youth.

TIME LINE FOR 2008 CONFERENCE YEAR

All materials due to the Conference Resource Center are to be sent to Marilyn Cleeton's attention on or before the deadline. Chairpersons: please notify your committee members of these dates and their responsibilities.

2008 DEADLINES	Materials/requests due to Resource Center (c/o Marilyn Cleeton) unless otherwise noted
February 15, Friday	Requests to be considered to be on the Annual Conference AGENDA must be received by AMY BOTTI in the Bishop's office
March 14, Friday	All Materials due for Pre-Conference Packets includes <ol style="list-style-type: none"> 1. Reports to Annual Conference, summary of activities, review of 2007 goals, updated/new 2008 Goals, Goals for 2009 2. Resolutions
March 14, Friday	All <u>approved</u> flyers, brochures, etc for inclusion in Annual Conference Packets – that are not camera ready
May 1, Thursday	All Worship Booklets – camera ready
May 2, Friday	All Projection Presentations (any multi-media, i.e. PowerPoint, etc)
May 2, Friday	<u>ALL SCRIPTS</u> for <u>ALL PRESENTERS</u> at Annual Conference must be received by AMY BOTTI
May 2, Friday	All camera ready approved flyers, brochures, etc for inclusion in Annual Conference Packets
June 20, Friday	DEADLINE for ALL materials for inclusion in the Conference Journal

Important Dates	
May 9, Friday	Clergy-Laity Banquet – Dover: Whatcoat 6:00 to 9:00 pm
May 12, Monday	Pre-Conference Orientation – 7:00 to 9:00 pm – Easton District @ Federalsburg: Union UMC
May 13, Tuesday	Pre-Conference Orientation – 7:00 to 9:00 pm – Dover District @ Milford: Avenue UMC
May 14, Wednesday	Pension Luncheon – Duncan Center
May 20, Tuesday	Pre-Conference Orientation – 7:00 to 9:00 pm – Wilmington District @ Elkton UMC
May 21, Wednesday	Pre-Conference Orientation – 7:00 to 9:00 pm – Salisbury District @ Ocean Pines: Community
June 7, Saturday	Laity Session – Schwartz Center, Dover – 9:00-11:30 am.
June 11, Wednesday	Clergy Executive Session, Camden: Whatcoat 9:00-12:00
June 11, Wednesday	Extension Ministry Luncheon, Camden: Whatcoat
June 11, 12, Wednesday/Thursday	African-American Summit @ University of Maryland, Eastern Shore in Princess Anne, MD
June 13, 14, 15 Friday/Saturday/Sunday	224th Session of the Peninsula-Delaware Conference @ University of Maryland, Eastern Shore in Princess Anne, Maryland

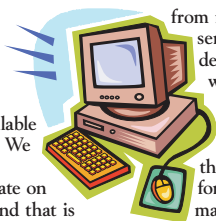
New E-Mail List for Conference Members/Guests

By **Tamara Ward,**
Communications Coordinator

The Bishop Felton Edwin May Resource Center is launching a new e-mail list that will be available to our conference members and guests. We recognize that many of our conference members would like to be kept up to date on what is happening in the Conference and that is why we have created this new list.

Examples of the makeup of this new list include conference committee/team volunteers, district lay volunteers, and local church officers but in no way is limited to these persons. Anyone interested in receiving this information can sign up to receive this type of service. E-mails that will be sent to this group include local church announcements, deaths of conference/general church members, periodic blasts announcing conference events, etc.

Should you know someone that would benefit



from receiving these e-mails, please have them send an e-mail directly to tward@pen-del.org and I will add them to this list. I will need their name, mailing address, e-mail address, phone and district where they reside.

This is a free service. The only thing that will be asked as we start this group is for those persons that sign up to receive e-mails, if they would contact us at the same e-mail address above, should their e-mail change. Due to the number of people that could possibly be included, we will not be able to keep up with undeliverable e-mails. Those that are returned consistently will be considered no longer deliverable and will be deleted from the system. To ensure that our e-mails reach you, please add us to your list of 'non-spam' e-mail addresses.

We hope that this addition will be a positive communication tool to our conference members and friends.

Conference Loses Two Beloved Members

The Peninsula-Delaware Conference is mourning the loss, along with their families, of two persons that had a love of this conference and showed it with the sharing of their gifts.

Patrick Tillman Coates, Sr. went to the church triumphant on Saturday, January 19th after an extended illness. He was born and was raised in Philadelphia, Pennsylvania and came to Delaware for college where he met his future wife, Denise, and made this area their home.

Patrick was a faithful member of Wesley Chapel United Methodist Church in Lincoln, Delaware for 34 years. He served as the Chairperson of both the Administrative Board and Finance Committee during his time at Wesley as well as the Vice President of the United Methodist Men. He was also a Certified Lay Speaker and Lay Leader at Wesley. On the Conference level he served as the treasurer for the Black Methodist for Church Renewal (BMCR).

In addition to his church affiliations Patrick was also very active in the community as a coach for Pop Warner Football and Little League Baseball, a member of several civic organizations and other various



community groups. At the time of his death he was passionately working on a project to establish a health clinic in Slaughter Neck and surrounding areas. He was also a devoted Philadelphia Eagles fan.

Barbara Dawson Jones departed this life to inherit the place God had prepared for her on Wednesday, January 30th. She was a partner in ministry of the United Methodist Church with her husband, W. LeRoy Jones, both in Pennsylvania and Delaware. Since their 'retirement' from full-time ministry they had served for brief periods in Magnolia, Little Creek, Leipsic, Harrington, Camden, Smyrna and Dover. She was a member of Wesley Church in Dover and a member of the United Methodist Women. She also played in the handbell choir. Just recently she was elected President of the Peninsula-Delaware Conference of the UMW. She was also a member of the Newcomers Club of Dover. Additionally, she volunteered weekly at the W. Reilly Brown Elementary School with the Visually Impaired program.

The entire body of the Annual Conference sends their thoughts and prayers out to Patrick and Barbara's families.

Without you, we can accomplish little

For the last several years, we have been encouraging each church to give \$1.00 a month per member in missions outreach. We hope those who have will go beyond the \$1. For the others, please take up this goal as doing so will impact the World for Christ. Here is our suggested allocation we will be using for the next four years.

Here are the goals for the churches of our Conference:



The Central Congo Partnership -- \$1 per member

Launched in 2003, our support has become even more vital as the economy in the Dem. Rep. of the Congo has failed to recover from years of Civil War. Your dollar pays salaries and supplies for the medical clinic. It buys food for the nutrition center. We are now starting an agricultural project to aid local farmers.

The Annual Conference Appeal -- \$1 per member

Each year the Sessions Committee selects several pressing needs here and around the world to give special attention to. Your generous support has allowed us to raise more each year to where we are now 50% of the way to reaching this goal. Early each spring, churches will be sent information related to that year's Appeal.



Special Sundays -- \$1 per member

These Sundays raise funds to address special needs people in our country have. They allow you to share with your church what the UMC is doing to combat some of the social problems facing our nation. Each church is asked to raise at least \$1 per member for the Special Sundays, less than the cost of a cup of coffee or a soda. If your church wants to take one offering and divide it up to six ways, that's fine, too.



Board of Ordained Ministry (BOOM) Scholarship Fund -- \$1 per member

With funds provided by your apportionment payments, our Conference can only cover about 16% of the cost of training our pastors in seminary and the Course of Study program. We need to do better. Donations to the BOOM Scholarship Fund help us cover more of this educational expense. For churches who have a member studying to be a pastor, adopt them as a missionary and cover part or all of their training expenses. This goal will allow our Conference to cover almost 25% of these costs!



Local Outreach and Conference Advance Specials -- \$4 per member

Missions outreach starts just outside the church door. What can your church do for the hurting in your community? Support local food & clothes efforts; Habitat for Humanity or conference supported centers such as Neighborhood House and Salisbury Urban Ministries.



The Advance/Missionary Support -- \$4 per member

The Advance has over 2000 projects to choose from covering every possible ministry and over 100 countries. Every church should be able to find at least one that touches their heart. Or select a missionary to support. Remember, 100% of all Advance gifts go to the project or missionary. Support costs are covered by your apportionments.



➤ Important: All missions support (other than purely local projects) should be sent to the Conference Office in a timely manner using the official Conference Benevolence Transmittal Form.

For more information on any of these missions topics, go to www.pen-del.org.

Conference Calendar of Events

March 2008

- | | |
|---|---|
| <p>2 Confirmation Celebration, Ocean View: Mariner's Bethel UMC, 3:00-6:00 p.m.</p> <p>3-5 Nurturing Wholeness in Community Seminar- Level 1, Rehoboth: Atlantic Sands</p> <p>6 CANCELLED-Resource Development Management Team Meeting, BFEM Resource Center, 9:30 a.m.</p> <p>7 Worship Committee Sub-team Meeting, Wesley College: Rm. #206, 9:30 a.m.-3:00 p.m.</p> <p>9 Daylight Saving Time Begins</p> <p>10 Credit Union Meeting, BFEM Resource Center, 1:30 p.m.</p> <p>Peter D. Weaver Congo Partnership Team Meeting, BFEM Resource Center, 6:30 p.m.</p> <p>11 Congregational Development Corporation Meeting, BFEM Resource Center, 10:00 a.m.</p> <p>Black United Methodist Preachers Meeting, BFEM Resource Center, 11:00 a.m.</p> <p>Board of Lay Ministries Meeting, BFEM Resource Center, 7:00 p.m.</p> | <p>12 Vision Team Executive Committee Meeting, BFEM Resource Center, 9:30-11:30 a.m.</p> <p>Conference Hispanic/Latino Task Force Meeting, BFEM Resource Center, 7:00 p.m.</p> <p>13 Commission on Archives & History Meeting, Frederica: Barratt's Chapel, 10:00 a.m.</p> <p>Advocacy Resource Team Meeting, BFEM Resource Center, 2:00 p.m.</p> <p>Communications Commission Meeting, BFEM Resource Center, 6:30 p.m.</p> <p>15 United Methodist Women Spiritual Life Retreat, Chester, MD: Union-Wesley UMC, 8:30 a.m.-3:00 p.m.</p> <p>17 Annual Conference Sessions Team Meeting, Wesley College: Room #206, 4:00 p.m.</p> <p>19 Spiritual Formation Task Force Meeting, BFEM Resource Center, 6:00 p.m.</p> <p>21 Good Friday-BFEM Resource Center Closed</p> <p>25 Conference Board of Trustees Meeting, BFEM Resource Center, 5:00 p.m.</p> <p>27 Health Ministries Task Force Meeting, BFEM Resource Center, 10:00 a.m.</p> |
|---|---|